

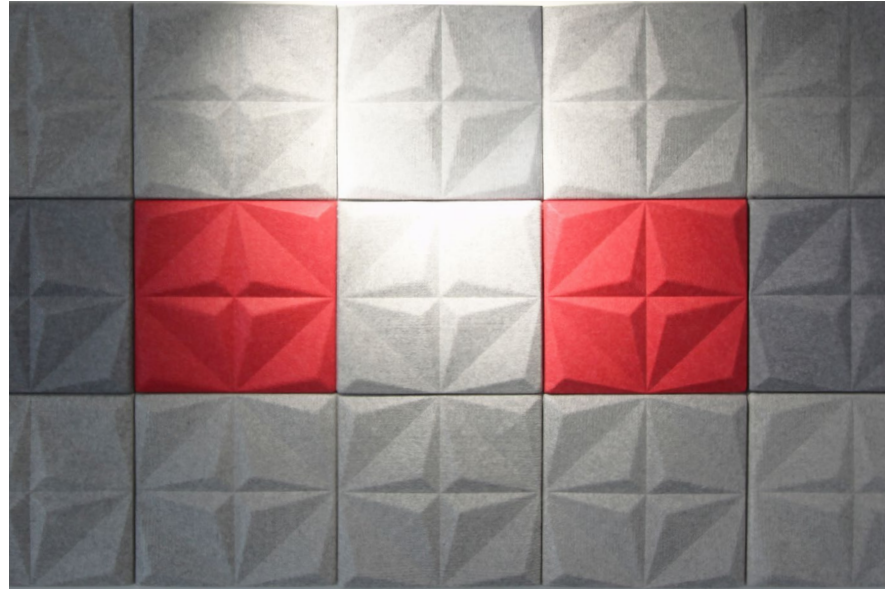
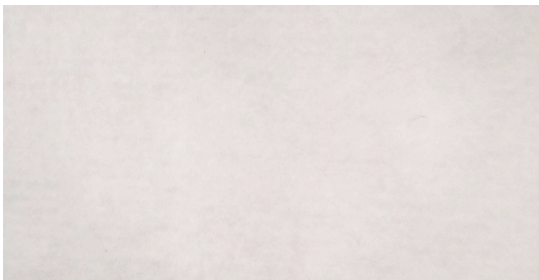
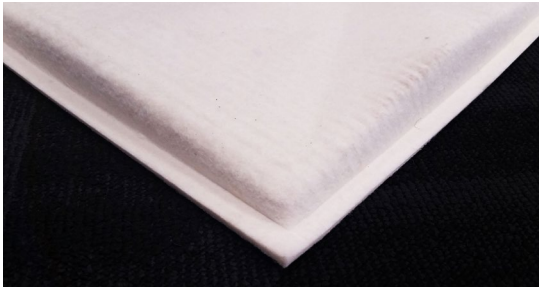


INT&RIOR SYSTEMS

Guiding Design • Informed Interiors

/w/ www.tris.co.nz
/p/ 0800 666 556
/e/ info@tris.co.nz

FLOC 3D Wool Acoustic Panel



Floc 3D is a contemporary and sustainable choice for commercial and residential interiors. The tile is made from woollen fibres pressed into a 3D configuration to give exceptional acoustic and wellness benefits to the interior environment.

Sheep farming was once NZ's most important agricultural industry and NZ wool was our most valuable export. At the moment, it has fallen to 19th among our commodity exports. Unlike Merino which is in ever increasing demand, strong wool hasn't had the same amount of success yet. T&R is supporting the use of NZ grown strong-wool. Floc 3D is grown, manufactured, and hand-crafted in New Zealand.

- This product has a High Noise Reduction Coefficient (NRC) to reduce Reverberation Time.
- It is suitable for high end offices, meeting rooms and other commercial and residential interiors.
- 30 year lifetime warranty.
- Floc 3D can be complimented with Focus 3D panels, to add contrast and colour to a Floc 3D array.



THE BENEFITS OF WOOL

The unique beneficial properties of wool have never been synthetically reproduced.

- Wool absorbs harmful air pollutants (such as formaldehyde) and does not re-emit them. It has been estimated that wool which is used in interiors can help purify the air for up to 30 years.
- Wool is hypoallergenic - it is resistant to bacteria, mould and mildew that can trigger allergic reactions. It has microscopic pores that respond effectively to changes in humidity preventing microorganisms from growing and breeding.



Our wool is sourced through Studio ZQ. ZQ represents the wool of choice for world-class brands that are serious about producing amazing natural products. This partnership enables the Floc 3D tiles to be linked back to farms with high animal welfare and environmental standards.

Wellington Head Office
12 Glover St, Ngauranga
Wellington 6035
PO Box 38533
Wellington Mail Centre 5045
/t/ 04 499 5915

Auckland
19 - 21 Fairfax Ave,
Penrose, Auckland 1061
PO Box 112360,
Penrose, Auckland 1642
/t/ 09 571 0395

Christchurch
69 Disraeli St, Addington
Christchurch 8023
PO Box 7197
Christchurch 8240
/t/ 03 366 2507



www.tris.co.nz

info@tris.co.nz



INT&RIOR SYSTEMS

Guiding Design • Informed Interiors

/w/ www.tris.co.nz
/p/ 0800 666 556
/e/ info@tris.co.nz



FLOC 3D Wool Acoustic Panel



TRACEABILITY



CONSISTENT
FIBRE QUALITY



ANIMAL
WELFARE



ENVIRONMENTAL
CERTIFIED
SUSTAINABILITY



SOCIAL
RESPONSIBILITY



CERTIFIED

These standards are independently audited to ensure a high level of compliance.

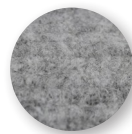
TEST DATA	RESULT	TEST METHOD
Absorption (Direct Fix) (ISO 354)	0.65 NRC	ASTM C423 – 99
	α_w 0.45	ISO 11654: 1997
	SAA 0.86	ASTM C423
Absorption (Suspended) (ISO 354)	0.80 NRC	ASTM C423 – 99
	α_w 0.80	ISO 11654: 1997
	SAA 0.89	ASTM C423
Fire Test -	Group 3	
Weight	1.4 kg/m ²	
Colours		



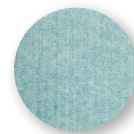
BELLIES & DAGS



NATURAL WHITE



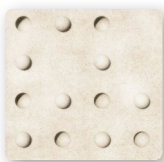
GREY



OCEAN MIST

TILE RANGE

DIRECT FIX TILES (500x500) Ceiling And Wall



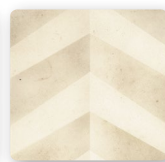
DIMPLE



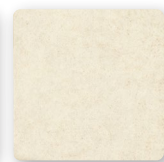
GEMINI



PIVOT



CHEVRON



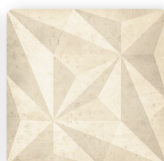
FLAT



FRACTILE



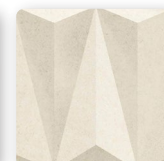
SIREN



SPECTRUM



ATLAS



SWISH

CEILING TILES (600x600)



FLAT



SPECTRUM



VIENNA



FRACTILE



CHEVRON

Wellington Head Office
12 Glover St, Ngauranga
Wellington 6035
PO Box 38533
Wellington Mail Centre 5045
/t/ 04 499 5915

Auckland
19 - 21 Fairfax Ave,
Penrose, Auckland 1061
PO Box 112360,
Penrose, Auckland 1642
/t/ 09 571 0395

Christchurch
69 Disraeli St, Addington
Christchurch 8023
PO Box 7197
Christchurch 8240
/t/ 03 366 2507

www.tris.co.nz

info@tris.co.nz



INT&RIOR SYSTEMS

Guiding Design • Informed Interiors

/w/ www.tris.co.nz
/p/ 0800 666 556
/e/ info@tris.co.nz



Wellington Head Office
12 Glover St, Ngauranga
Wellington 6035
PO Box 38533
Wellington Mail Centre 5045
/t/ 04 499 5915

www.tris.co.nz

Auckland
19 - 21 Fairfax Ave,
Penrose, Auckland 1061
PO Box 112360,
Penrose, Auckland 1642
/t/ 09 571 0395

Christchurch
69 Disraeli St, Addington
Christchurch 8023
PO Box 7197
Christchurch 8240
/t/ 03 366 2507

info@tris.co.nz



INT&RIOR SYSTEMS

Guiding Design • Informed Interiors

/w/ www.tris.co.nz
/p/ 0800 666 556
/e/ info@tris.co.nz



Wellington Head Office
12 Glover St, Ngauranga
Wellington 6035
PO Box 38533
Wellington Mail Centre 5045
/t/ 04 499 5915

www.tris.co.nz

Auckland
19 - 21 Fairfax Ave,
Penrose, Auckland 1061
PO Box 112360,
Penrose, Auckland 1642
/t/ 09 571 0395

Christchurch
69 Disraeli St, Addington
Christchurch 8023
PO Box 7197
Christchurch 8240
/t/ 03 366 2507

info@tris.co.nz